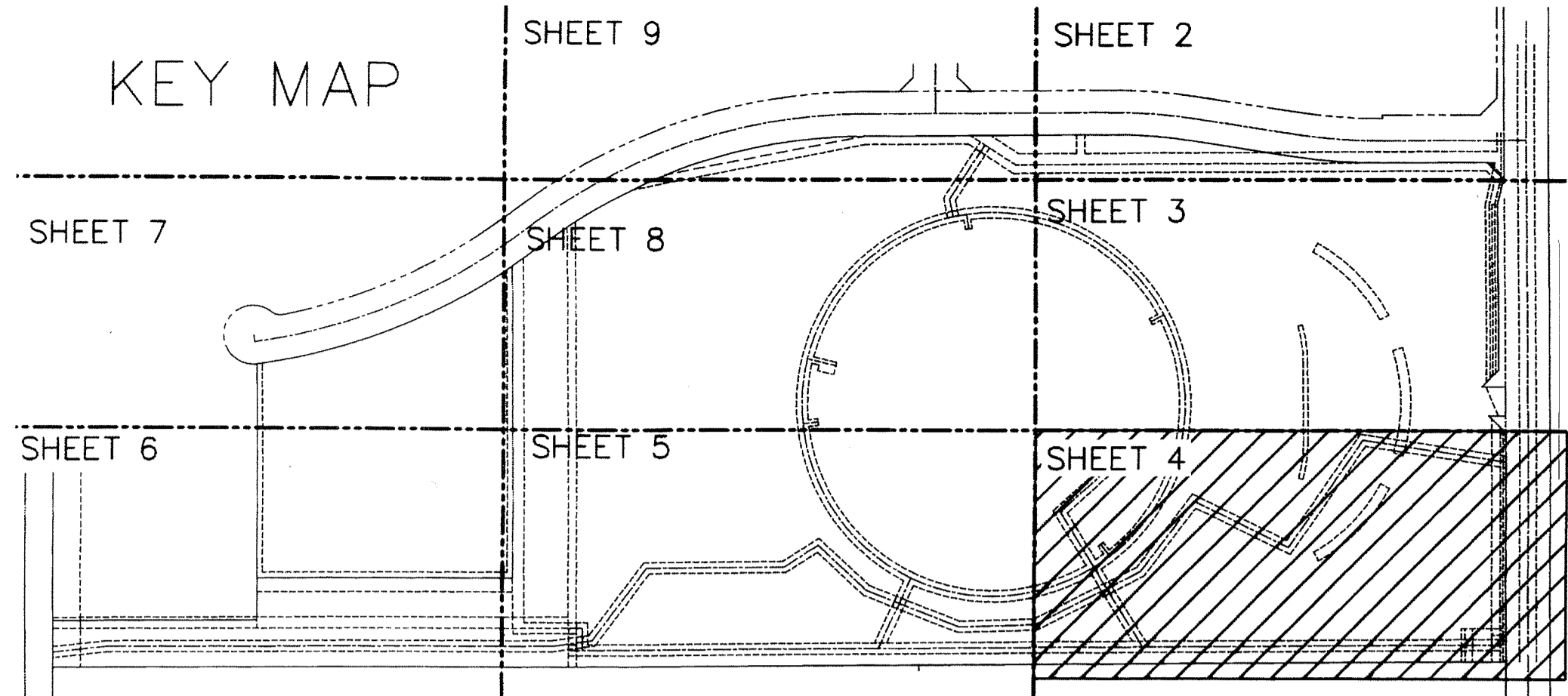


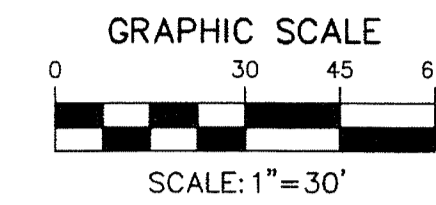
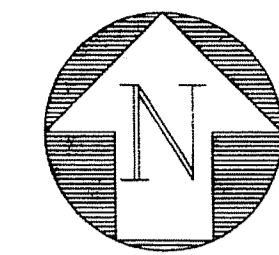
KEY MAP



BETHESDA HEALTH CARE MUPD

BEING A REPLAT OF A PORTION OF PARCEL B-2 AND A PORTION OF PARCEL A-2 OF BOYNTON BEACH ENTERPRISE CENTER PLAT NO. 2 AS RECORDED IN PLAT BOOK 79, PAGE 152, LYING IN SECTION 28, TOWNSHIP 45 SOUTH, RANGE 42 EAST, PALM BEACH COUNTY, FLORIDA

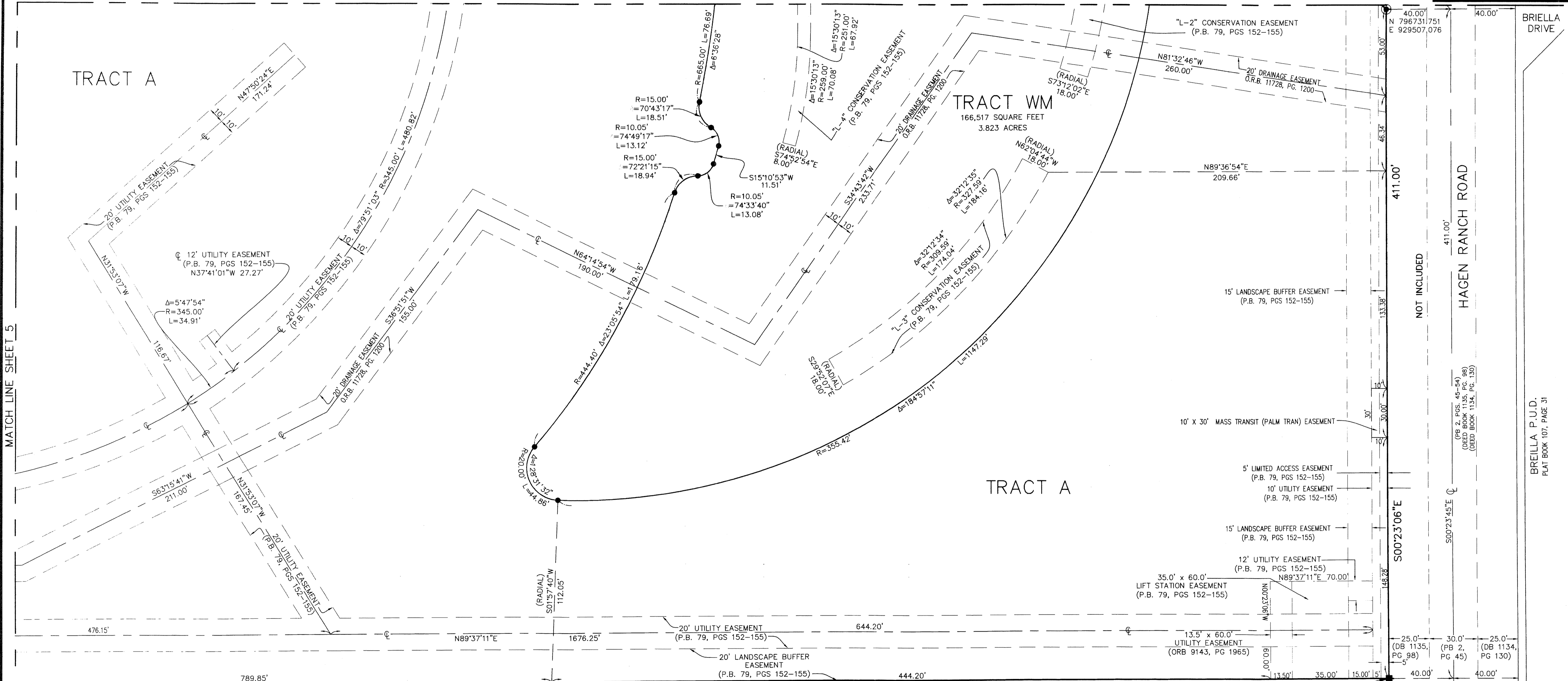
SHEET 4 OF 9



STATE OF FLORIDA }
 COUNTY OF PALM BEACH } S.S.
 THIS INSTRUMENT WAS FILED FOR
 RECORD AT _____
 THIS ____ DAY OF _____
 201 ____ AND DULY RECORDED
 IN PLAT BOOK NO. _____
 ON PAGE _____
 SHARON R. BECK,
 CLERK AND COMPTROLLER
 BY: _____ D.C.

161

MATCH LINE - SEE SHEET 3



MATCH LINE SHEET 5

NOT INCLUDED

HAGEN RANCH ROAD

BRIELLA P.U.D.
PLAT BOOK 107, PAGE 31

Y:\Land Projects\25\5013.07\eng\5013.07P101(STATE PLANE).dwg 7/22/2014 8:21:31 AM EDT

LEGEND

- | | | | | | |
|------------|----------------------------------|--------|-------------------------------------------------------------------------|-------|------------------------------------|
| ☉ | CENTERLINE | R.P.B. | ROAD PLAT BOOK | R | RADIUS |
| D.B. | DEED BOOK | R/W | RIGHT-OF-WAY | L | LENGTH |
| D.E. | DRAINAGE EASEMENT | (C) | CALCULATED | Δ | DELTA ANGLE |
| FPL | FLORIDA POWER & LIGHT | (D) | DEED | PRM | PERMANENT REFERENCE MONUMENT |
| O.R.B. | OFFICIAL RECORD BOOK | (P) | PLAT | PK | PARKER KAYLON |
| P.B.C.P.R. | PALM BEACH COUNTY PUBLIC RECORDS | ■ | SET 4" X 4" CONCRETE MONUMENT WITH ALUMINUM DISK STAMPED P.R.M. LB#6603 | PLS | PROFESSIONAL LAND SURVEYOR |
| P.B. | PLAT BOOK | □ | FOUND PERMANENT REFERENCE MONUMENT AS NOTED | PBCUE | PALM BEACH COUNTY UTILITY EASEMENT |
| P.O.B. | POINT OF BEGINNING | ● | SET MAG NAIL AND DISK PRM LB#6603 | | |
| P.O.C. | POINT OF COMMENCEMENT | ● | SET #5 IRON ROD AND CAP ENGENUITY LB#6603 | | |
| PG. | PAGE | | | | |

MINI ASSEMBLAGE P.U.D. PLAT SEVEN
 (PLAT BOOK 112, PAGE 167)
 P.B.C.P.R.

1307.55'
 2615.10'(OVERALL)

POINT OF BEGINNING:
 THE SOUTHEASTERLY CORNER
 OF BOYNTON BEACH ENTERPRISE
 CENTER PLAT NO. 2
 N 796320.750
 E 929509.837

PALM BEACH COUNTY CONTROL POINT "HAGEN" NOT FOUND
 N 795709.235 E 929474.109
 CALCULATED PALM BEACH COUNTY POSITION

BETHESDA HEALTH CARE MUPD

A Higher Standard of Excellence

ENGINEERS • SURVEYORS • GIS MAPPERS

1201 BELVEDERE ROAD, WEST PALM BEACH, FLORIDA 33405
 PH (561)655-1151 • FAX (561)832-9390
 WWW.ENGENUITYGROUP.COM

DATE	10/07/13
SCALE	1" = 30'
CAD FILE	5013.07P101
SOBK PROJECT	5013.07
DRAWN	STAFF
CHECKED	K.BECK

S
H
E
E
T

4/9

JOB NO.
5013.07